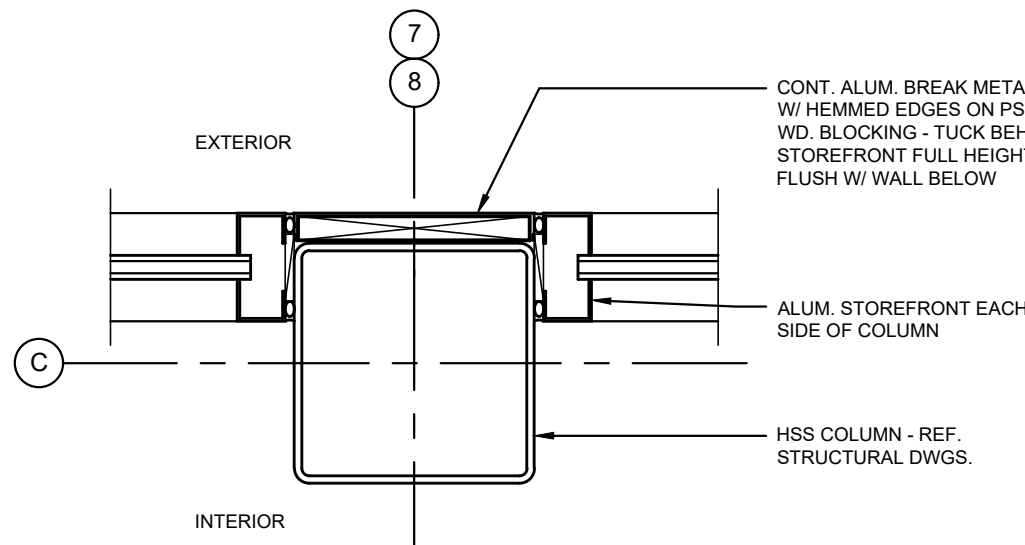
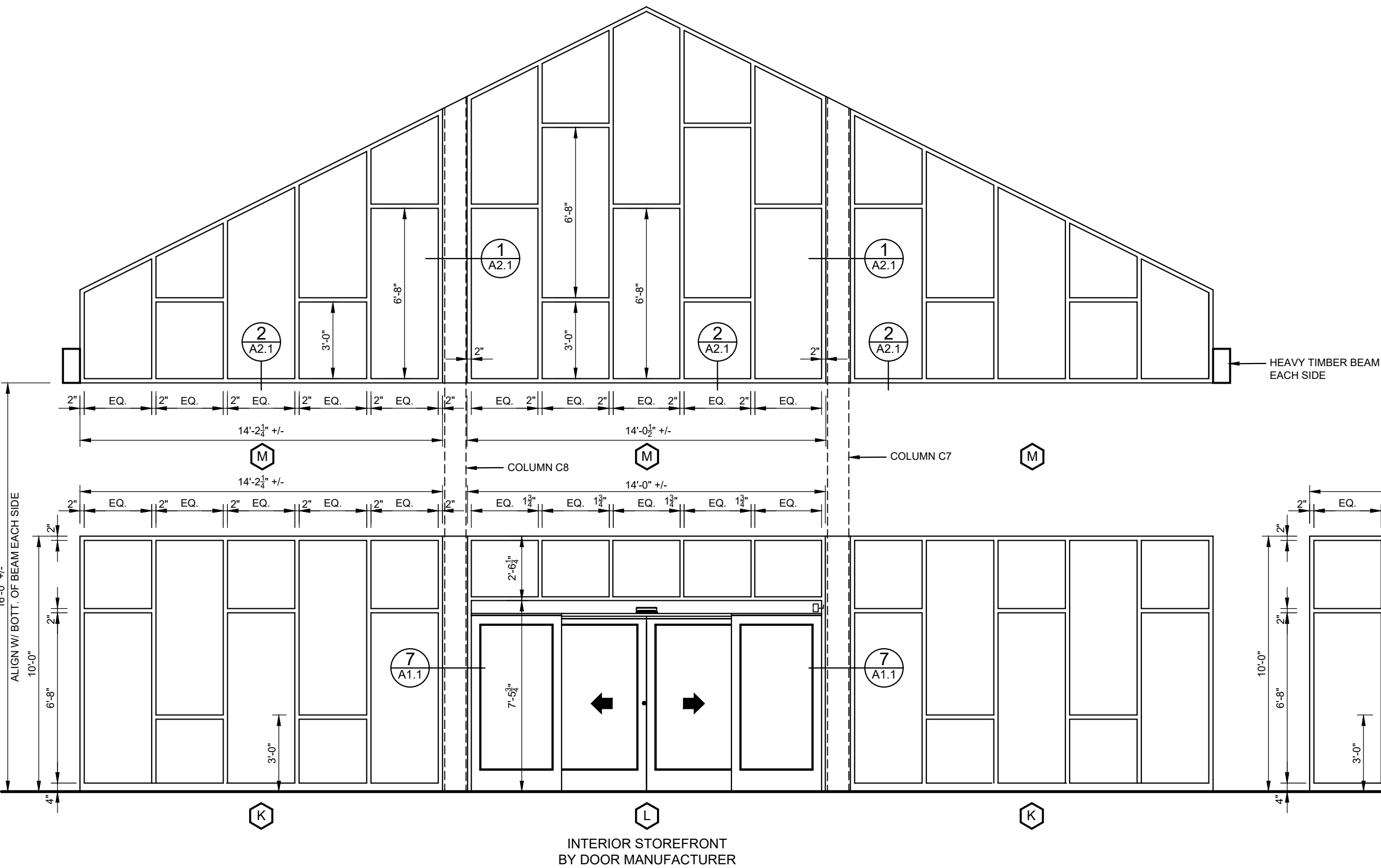
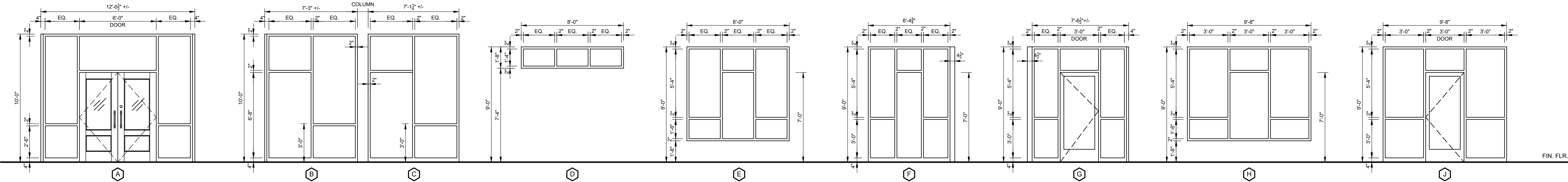
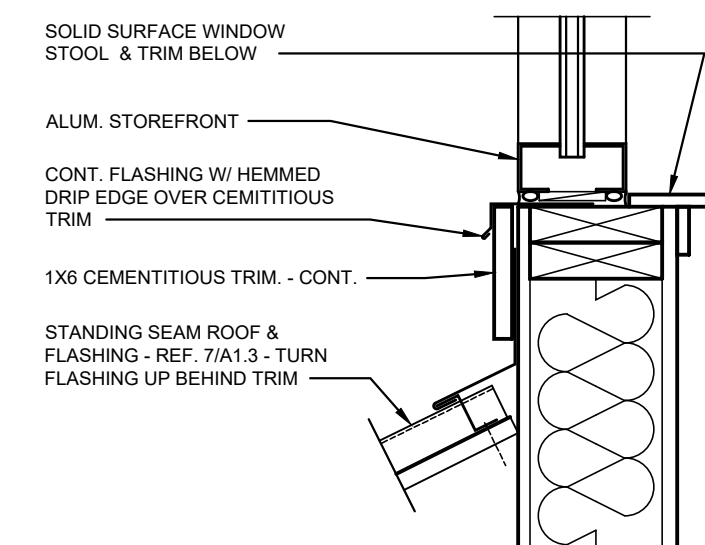


ALUMINUM STOREFRONT TYPES

1/4" = 1' - 0"



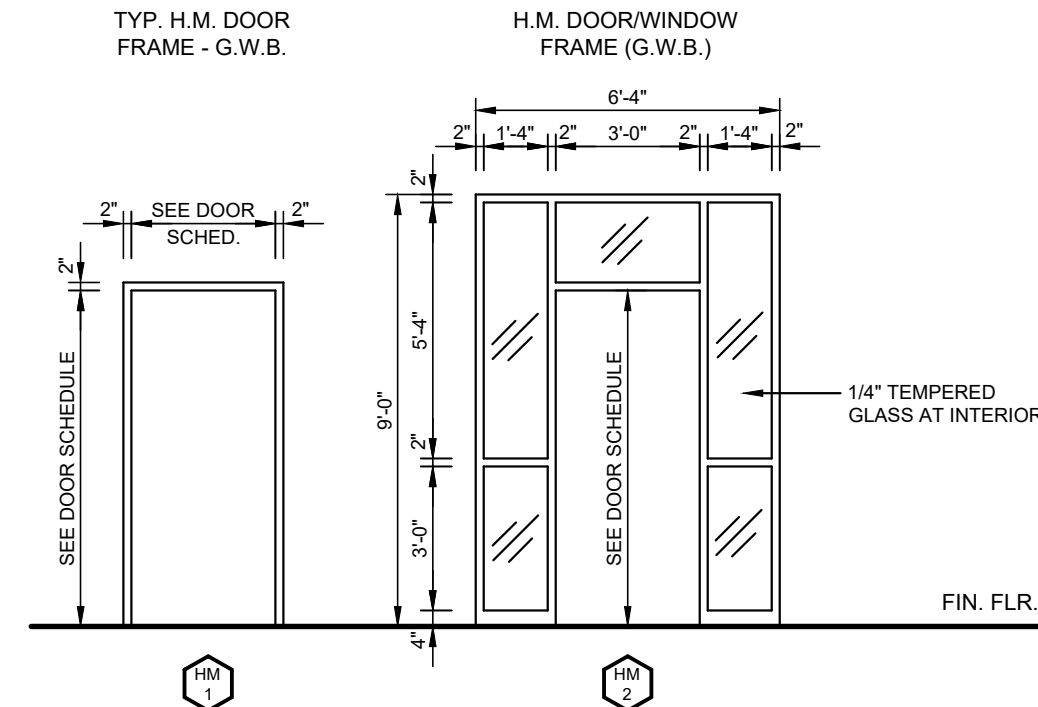
1
1 1/2" = 1'-0"



2
1 1/2" = 1'-0"

HOLLOW METAL FRAME TYPES

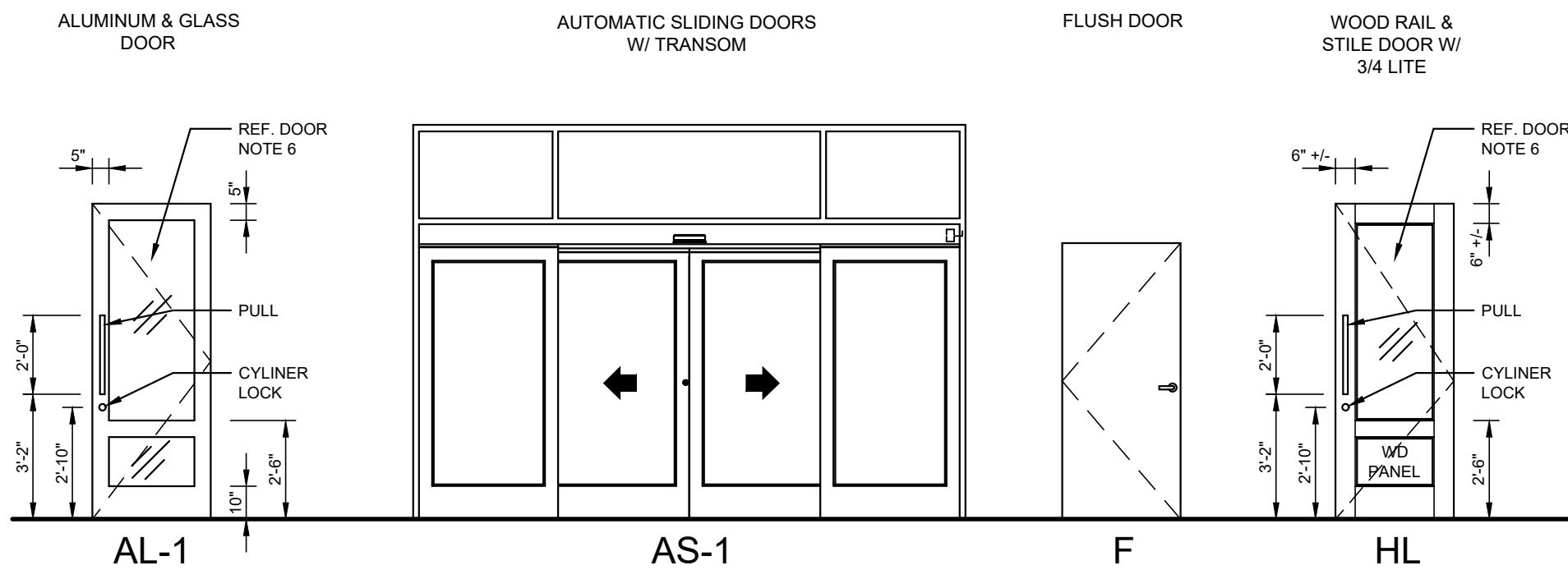
1/4" = 1' - 0"



DOOR SCHEDULE									
MARK	DOOR SIZE			MATL	TYPE	FRAME	FIRE RATING	NOTES	
	WIDTH	HGT	THK						
1	PR. 3'-0"	7'-0"	2 1/4"	WD	HL	ALUM		STAINED	
2	PR. 3'-0"	7'-0"	1 3/4"	ALUM	AL-1	ALUM			
3	PR. 3'-0"	8'-0"	1 3/4"	WD	HL	H.M.			
4	3'-0"	7'-0"	1 3/4"	WD	F	H.M.			
5	3'-0"	7'-0"	1 3/4"	WD	F	H.M.			
6	3'-0"	7'-0"	1 3/4"	WD	F	H.M.			
7	3'-0"	7'-0"	1 3/4"	WD	F	H.M.			
8	3'-0"	7'-0"	1 3/4"	WD	HL	H.M.			
9	3'-0"	7'-0"	1 3/4"	ALUM	AL-1	ALUM		REFERENCE DOOR NOTE 7	
10	3'-0"	7'-0"	1 3/4"	WD	HL	H.M.		HOLLOW METAL FRAME TYPE "HM-2"	
11	3'-0"	7'-0"	1 3/4"	WD	HL	H.M.		HOLLOW METAL FRAME TYPE "HM-2"	
12	3'-0"	7'-0"	1 3/4"	ALUM	AL-1	ALUM			
13	4'-3"	8'-0"				WD		REFERENCE DOOR NOTE 9	
14	14'-0"	7'-0"		ALUM	AS-1	ALUM		AUTOMATIC SLIDING DOORS	
15	3'-0"	7'-0"	1 3/4"	ALUM	AL-1	ALUM			
16	3'-0"	7'-0"	1 3/4"	ALUM	AL-1	ALUM			
17	6'-0"	8'-0"				WD		CASED OPENING W/ 1X HARDWOOD TRIM	
18	3'-0"	7'-0"	1 3/4"	WD	F	H.M.			
19	3'-0"	7'-0"	1 3/4"	WD	F	H.M.			
20	PR. 2'-6"	4'-2"	1 3/4"	WD	F	H.M.		REFERENCE DOOR NOTE 8 AND HARDWARE NOTE HN-8	
21	PR. 3'-0"	8'-0"	1 3/4"	WD	HL	H.M.			
22	3'-0"	7'-0"	1 3/4"	WD	F	H.M.			
23	3'-0"	7'-0"	1 3/4"	WD	F	H.M.			
24	3'-0"	7'-0"				H.M.		CASED OPENING @ VENDING - HOLLOW METAL FRAME TYPE "HM-2"	

DOORS TYPES

1/4" = 1' - 0"



DOOR NOTES

- ALL THRESHOLDS SHALL CONFORM TO THE REQUIREMENTS OF THE MOST CURRENT EDITION OF THE ANSI A117.1 HANDICAP CODE AND THE AMERICANS WITH DISABILITIES ACT.
- ALL WOOD DOORS TO BE STAIN GRADE SOLID CORE DOORS. WOOD SPECIES & CUT TO BE DETERMINED.
- THE CONTRACTOR SHALL CAREFULLY STUDY AND COMPARE THE CONTRACT DOCUMENTS AND THIS SCHEDULE AND SHALL REPORT AT ONCE TO THE ARCHITECT ANY ERROR, INCONSISTENCY OR OMISSION THAT HE MAY DISCOVER.
- ALL EXTERIOR SWINGING DOORS TO HAVE A MINIMUM U VALUE OF 0.70 PER THE 2009 INTERNATIONAL ENERGY CONSERVATION CODE.
- PROVIDE HOLLOW METAL FRAME TYPE "HM-2" AT VENDING 109. CASED OPENING IN LIEU OF DOOR.
- GLAZING FOR INTERIOR DOORS TO BE 1/4" TEMPERED. GLAZING FOR EXTERIOR DOORS TO BE INSULATED, LOW-E, AND TEMPERED.
- PROVIDE ELECTRIC STRIKE PER OWNER'S SEPARATE SECURITY CONTRACTOR'S CONTROL DEVICE.
- PROVIDE HOSPITAL STOPS ON HOLLOW METAL FRAME.
- PROVIDE 1X4 HARDWOOD TRIM CASED OPENING AT ONE JAMB AND HEADER. SEE BUILDING SECTION 3/A3.2.

HARDWARE SCHEDULE

SET DESCRIPTION	
1	KEYED CYLINDER LOCK W/ THUMB TURN, CLOSER, T&B FLUSH BOLTS, & PULLS (EA. SIDE OF EA. LEAF)
2	PULLS & CLOSER EACH LEAF
3	PULLS (CORRIDOR 103 SIDE ONLY), CLOSERS (HN-7), KEYED CYLINDER LOCK, & T&B FLUSH BOLTS
4	PUSH/PULL PLATE, KICK PLATE, & CLOSER
5	LEVER HANDLE STOREROOM LOCK SET & CLOSER
6	LEVER HANDLE OFFICE LOCK SET W/ CLOSER @ DOORS 10 & 11. PROVIDE ROUND WALL STOP @ DOOR 8.
7	LEVER HANDLE PASSAGE SET W/ CLOSER @ DOOR 19. PROVIDE ROUND WALL STOP @ DOOR 7
8	CABINET PULL (BOTTOM OF EA. LEAF), 180 DEGREE CONCEALED HINGE, & ADJUSTABLE BALL CATCH AT HEAD - REF. HN-8. PROVIDE SQUARE WALL STOPS.
9	LEVER HANDLE PRIVACY SET & CLOSER
10	PULL, CLOSER, & KEYED CYLINDER LOCK W/ THUMB TURN.

HARDWARE NOTES

- HN-1 HARDWARE MANUFACTURER, STYLE, AND FINISH TO BE SELECTED BY THE OWNER. REFERENCE SPECIFICATION SECTION 08710 FOR QUALITY STANDARD.
- HN-2 ALL EXTERIOR STOREFRONT DOORS TO RECEIVE TOP, INTERMEDIATE, AND BOTTOM OFFSET PIVOTS AS REQUIRED BY MANUFACTURER FOR DOOR HEIGHT TO MAINTAIN WARRANTY.
- HN-3 ALL 7'-0" TALL HINGED DOORS TO RECEIVE 1 1/2" PAIR BALL BEARING BUTT HINGES & SILENCERS UNLESS NOTED OTHERWISE. ALL 8'-0" TALL HINGED DOORS TO RECEIVE 2 PAIR BALL BEARING BUTT HINGES & SILENCERS UNLESS NOTED OTHERWISE.
- HN-4 ALL EXTERIOR DOORS TO RECEIVE CLOSER, WEATHER-STRIPPING & ADA COMPLIANT THRESHOLD.
- HN-5 PROVIDE TOP & BOTTOM FLUSH BOLTS ON INACTIVE LEAF AT PAIR OF DOORS. VERIFY ACTIVE LEAF WITH ARCHITECT/OWNER.
- HN-6 PROVIDE ROUND WALL MOUNTED DOOR STOPS AT DOORS 4, 5, 6, 8, 18. PROVIDE SQUARE STOPS AT DOORS 3, 20, 21, & 22.
- HN-7 PROVIDE HEAVY DUTY CLOSER W/ HOLD-OPEN @ 90 DEGREES AT DOORS 3, 10, 11, 19, & 21. PROVIDE PARALLEL ARM CLOSER AT DOOR 21.
- HN-8 PROVIDE ADJUSTABLE BALL CATCH AT HEAD OF EACH LEAF TO HOLD DOOR CLOSED. EQUAL TO BALDWIN #0425190 W/ BLACK FINISH.
- HN-9 KEYED CYLINDER LOCKS W/ THUMB TURNS TO BE MOUNTED BETWEEN 34" TO 48" ABOVE FINISH FLOOR AT DOORS #1, 15, & 16.