



# 403 Series

Self-Contained Compact Work Top Freezer



403 Series: Self-Contained Compact Work Top Freezer

## Models

- **403-WS1** Single section freezer on 3" casters, right hand door hinge
- **403-DHL-WS1** Single section freezer on 3" casters, left hand door hinge



403-WS1

## Standard Features

- Features Delfield's exclusive ABS interior. ABS is extremely durable - it won't dent, chip or corrode and is backed by a limited lifetime warranty
- Stainless steel front, sides and top
- Two epoxy coated wire shelves, standard installed per unit
- Environmentally friendly R404A refrigerant
- Foamed in place environmentally friendly, Kyoto Protocol Compliant, Non ODP (Ozone Depletion Potential), Non GWP (Global Warming Potential) polyurethane cuts energy costs
- Black recessed quick grip handle
- 3" (8cm) diameter casters
- Door hinging available on right or left side
- 60-cycle single phase electrical system
- 6' cord and plug supplied
- One year parts and labor, five year compressor standard warranty

## Options & Accessories

- Stainless steel back
- Plastic laminate on front
- Additional wire shelves
- Stainless steel single-tier overshell
- Rugged 6" high heavy duty metal legs
- 5" (13 cm) diameter casters
- Door lock (original order only; not field installable; per door)
- Full-size composite-type cutting top
- 220 volt, 50 Hertz electrical system\*

\* This option will alter the unit's electrical specifications

## Specifications

**Exterior bottom** shall be heavy-gauge galvanized metal. Exterior ends shall be heavy-gauge stainless steel.

**Exterior top:** One-piece, 22-gauge stainless steel with front edge turned down to form nosing and rear edge turned up to form a 2" (5cm) thick by 4" (10cm) high backsplash.

**Base interior:** One-piece thermoformed ABS plastic material, with integral shelf supports. Base shall be fully insulated with high-density foamed-in-place environmentally friendly, Kyoto Protocol Compliant, Non ODP (Ozone Depletion Potential), Non GWP (Global Warming Potential) polyurethane.

**Door** shall have a heavy-gauge stainless steel exterior, with a thermoformed ABS plastic interior liner, and shall be fully insulated with foamed-in-place polyurethane. Door handles shall be black, recessed ABS. Cabinet shall have (2) adjustable epoxy-coated wire shelves installed.

Equipment shall be mounted on 3" (8cm) diameter casters.

**Electrical Connections:** 115 volt, 60 Hertz, single phase. Unit shall have a 6' (1.8 m) long electrical cord and NEMA 5-15P plug. Cord and plug shall be located on the rear of the cabinet 16" (41cm) above floor, 5" (13cm) from left side.

**Freezer:** Refrigeration system shall use HFC-404A refrigerant. Compressor shall be 1/5 h.p., with condenser coil, temperature control and hot gas condensate evaporator mounted on rear of cabinet. Evaporator coil shall be mounted on the interior rear wall of the cabinet. Refrigerant flow shall be controlled by a capillary tube. Cabinet shall maintain -5°F to 0°F (-21°C to -18°C) interior cabinet temperature.

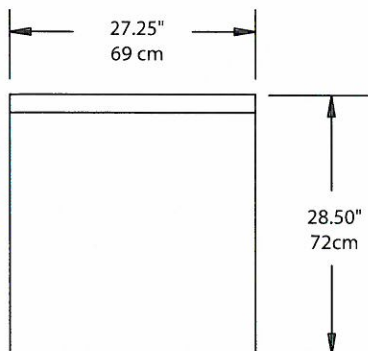
System is controlled using Delfield's ACT-Advanced Control Technology electronic temperature control, which provides improved pull down times, reduces compressor cycling and longer compressor life with lower energy consumption.



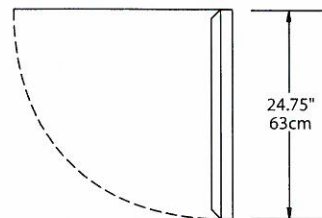


Self-Contained Compact Work Top Freezer

# 403 Series

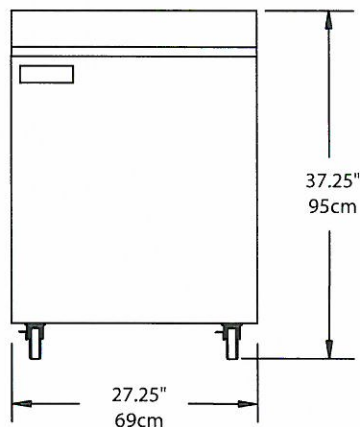


Plan View  
403-WS1,  
403-DHL-WS1

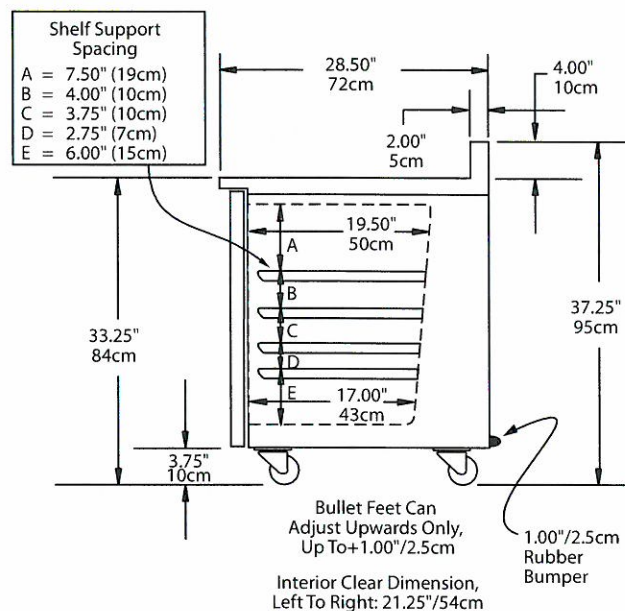


Standard door hinging is on right  
Hinging may be reversed  
But a new door is required

Door Clearance



Elevation View  
403-WS1



End View  
403-WS1, 403-DHL-WS1

## INSTALLATION NOTE:

Refrigeration system is designed so that air will flow under the unit, through the compressor area and out the top rear of the unit. Any restriction to this air flow path will void the warranties.

## Specifications

| Model                   | # of Shelves | Shelf Area         | Volume             | H.P. | V/Hz/Ph  | Amps | Nema Plug | Ship Weight   | Energy (KWH/Day) |
|-------------------------|--------------|--------------------|--------------------|------|----------|------|-----------|---------------|------------------|
| 403-WS1,<br>403-DHL-WS1 | 2            | 4.6ft <sup>2</sup> | 5.7ft <sup>3</sup> | 1/5  | 115/60/1 | 5.8  | 5-15P     | 184lbs (83kg) | 2.53             |

Delfield reserves the right to make changes to the design or specifications without prior notice.

980 S. Isabella Rd.  
Mt. Pleasant, Michigan 48858

Phone: 800-733-8948 or 989-773-7981  
Fax: 800-669-0619  
www.delfield.com

Printed in the U.S.A.  
DS403PH  
09/12

